



WECO PLASTIK® – your provider for hygienic ceiling
and wall systems

impact resistant, washable, durable, hygienic...
...for all food processing and wet areas



 Made in Germany

WECO PLASTIK®

WECO PLASTIK® – hygienic ceiling and wall profiles

WECO PLASTIK® hygienic ceiling and wall profiles combines good shape with durability

We manufacture our profiles with high quality (leadfree based on calcium zinc stabilisation). Our hygienic panellings/profiles are resistant against wetness/humidity and are well proven for years in all related environments of food processing industry resp. wet areas like:

- butchers/meat industry
- bakeries
- dairies
- fish industry
- breweries
- swimming pools
- spa and leisure center
- canteens/catering
- changing rooms/shower rooms
- industrial production areas
- car wash buildings

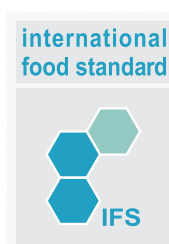
WECO PLASTIK® products are used in most extreme environments where paintings are just working for a short time or condensation starts in ceiling or walls. Our high quality panels/profiles are inherently stable and easy to fit.

WECO PLASTIK® ceiling and wall profiles are directly fixed (or suspended) on sub construction in which pipes, electric cables, etc. can be covered easily. Result of that are plain surfaces which are easy to clean.



WECO PLASTIK® ceiling and wall panellings are:

- hygienic
- washable
- sanitisable
- resistant against cleaning agents
- applicable for wet areas
- easy to fit
- well proven according to standards/ specifications of food processing regulation, HACCP/IFS-guidelines.



Item no. 3020 CZ - (ceiling panel)

Thickness: 8 mm
Width: 200 mm
Weight: 2,75 kg/m²
Length: cuttings till 6 m
Colours: white, grey, ivory

Water-proof because of double tongue and groove joint!



Item no. 3020 H - WECO HART (wall panel)

Thickness: 7 mm
Width: 200 mm
Weight: 4,75 kg/m²
Length: cuttings till 6 m
Material: solid core (foamed),
surface Hard-PVC
Colours: white, grey, ivory, grey marble,
blue marble, multi-color, 3D-metallic



"WECO PLAST IK ceiling and wall panels equals to the standards and specifications of food processing regulation resp. HACCP/IFS-guidelines."



Solutions for refurbishment of car wash / petrol stations



Our hollow chamber ceiling panel item no. 3020 CZ are easy to fit and because of their weight easy to suspend with commercially available dry wall suspension systems.

With our solid wall panel item no. 3020 H - WECCO HART you can establish mechanical resistant, plain wall surfaces which are easy to clean.



As a result of all positive properties our ceiling and wall panels are almost predestined for usage in wet room conditions. They allow durable solutions for coverings of ceiling and walls in car wash areas / cleaning areas.

WECO PLASTIK® ceiling and wall panels are:

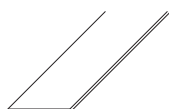
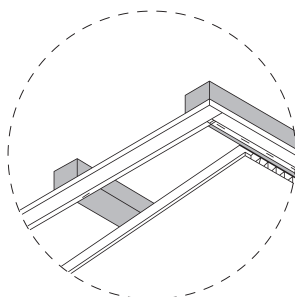
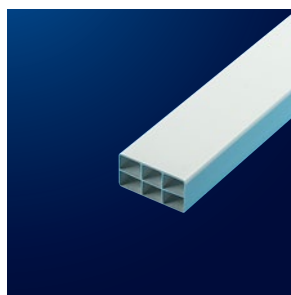
- washable
- resistant against most cleaning agents
- certified according to standards/specifications
- easy to fit
- with plastic sub construction you can establish ventilated reverse sides



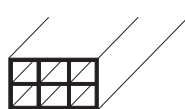
For each case – the right solution!

WECO PLASTIK® seams/edging/trim profiles accessories:

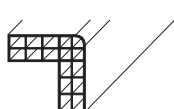
Find below just a part of our available accessories and trim profiles.
Easy fitting for all applications.



4807



4824



7272

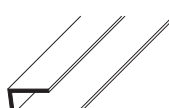
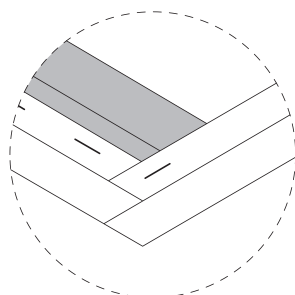
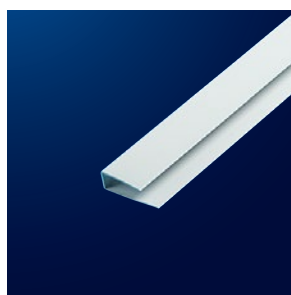
Plastic sub construction:

Establish sub construction in a distance of 30 to 40 cm. You can use commercially available suspension systems.

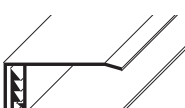
As needed you can fill the gap between with insulation material. In order to achieve gas-proven environment you can use dampprove membrane between sub construction and panels.

Item no.: Description:

4807	sub construction 48x7 mm
4824	sub construction 48x24 mm
7272	corner lath 72x72 mm



7008 U 8



7118 U 8-18



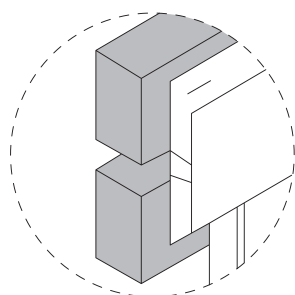
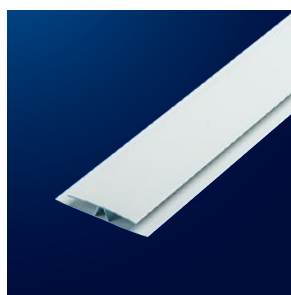
7508 RU 8

U-profiles / end strips:

U-profiles are used as end trims / surrounding and are fixed with stainless steel clamps or screws on sub construction. You can establish nearly jointless connections between ceiling and wall.

Item no.: Description:

7008 U 8	U-profile for profile height 7-8 mm
7118 U 8-18	U-profile two-part for profile height 8, 10, 14, 18 mm
7508 RU 8	Radius U-profile for profile height 7-8 mm



7208 ST 8



7228 Uni 8



7288 ST 8

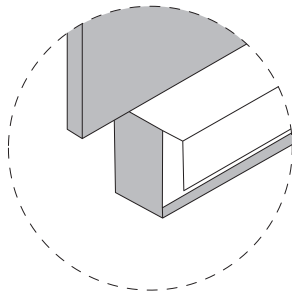
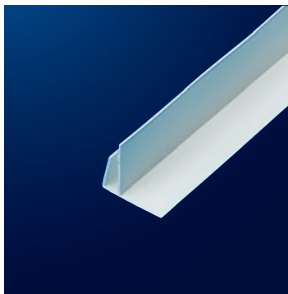
H-profiles / joinings:

H-profiles are used to connect panels in an endless way. Therefore you can establish big hygienic surfaces.

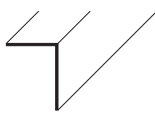
Item no.: Description:

7208 ST 8	H-profile for profile height 7-8 mm
7228 Uni 8	flexible H-profile for profile height 8 mm
7288 ST 8	H-profile (two-parts) for profile height 8 mm

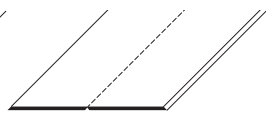
A complete overview about all available seams/trim profiles/accessories you can find on our website:
www.wecoplastik.de - product line: seams/edging/trim profiles/accessories



7408 LE 8



7307 EE

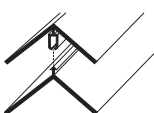
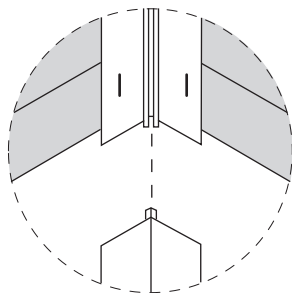
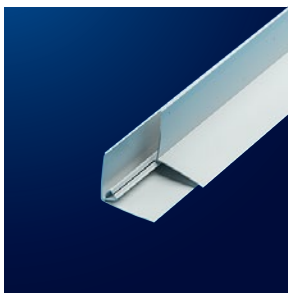


6060

F-profiles / soffits:

F-profiles and corner profiles are used to cover window/door soffits. The sub construction is covered by this profiles.

Item no.:	Description:
7408 LE 8	F-profile for profile height 7-8 mm
7307 EE	corner profile 24x32x1 mm
6060	Flexible corner profile 60x60x3 mm



7308 E 8



7355



7555

Corner profiles:

You can cover internal/external corners with various one- and two-part corner profiles.

Item no.:	Description:
7308 E 8	corner profile (two-parts) for profile height 7-8 mm
7355	external corner profile 55x55x3 mm
7555	internal corner profile 55x55x3 mm



Accessories:

Accessories for fixation of ceiling and wall panels resp. sealing/bonding of trims an edges.

Item no.:	Description:
9045	stainless steel clamps - type A (12,9x8 mm, 12,9x16 mm)
9091	1K hybrid bonding/sealing mass for food processing areas

Coving profile

Our unique coving profile item no. 7335 with flexible edges can be fixed also retroactively. You can establish easily round corners which are easy to clean.

Advantages:

- upper part with predesigned three-dimensional cutting
- no hollow space in corners
- bottom part in solid material (foamed) - with pre-punched fixing holes
- easy to fit / applicable also retroactively
- manufactured in high quality leadfree and antibacterial raw material

Item no.: 7335

Upper part: Hard-PVC with flexible edges
incl. three-dimensional cut

Bottom part: solid material (foamed),
with pre-punched holes

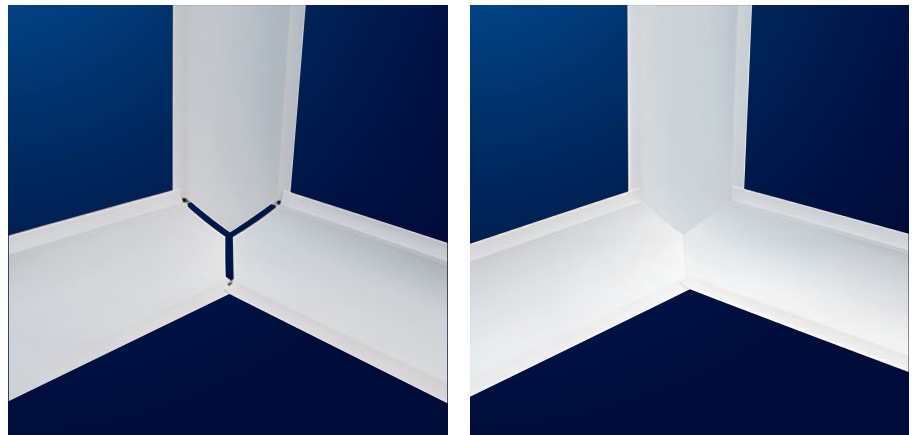
Dimensions: 37x37 mm

Radius: 35 mm

Length: 3 m / 4 m

Colour: white sim. RAL 9010

Packing unit: 15 pieces



Available with prefabricated three-dimensional cutting.
No time consuming cuttings required.

Coving profile / massive internal corner / skirting

WECO PLASTIK® coving / skirting profile item no. 7550 is an extremely impact resistant solution for skirtings and internal corners.

Perfect solution for skirtings/wall sockets and internal corners!

- manufactured in high quality leadfree raw material
- certified for food processing areas
- no hollow space in corners
- highly impact resistant
- hygienic rounded edges
- resistant against almost all chemical cleaning agents
- no absorption of water

Especially applicable for:

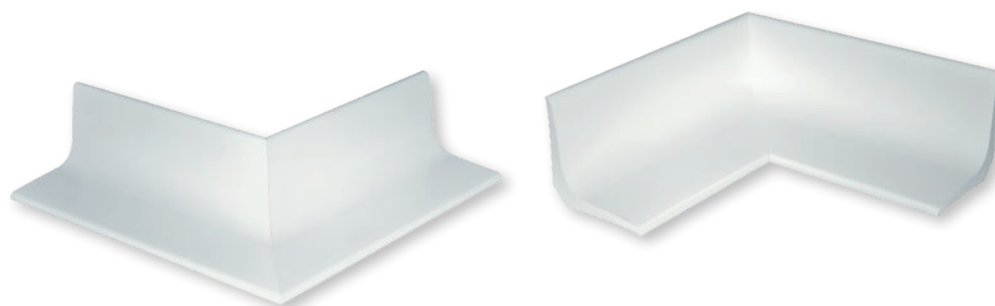
- all food processing areas
- wet rooms / wet areas
- industrial / commercial processing areas
- container construction, etc.



Item no.: 7550

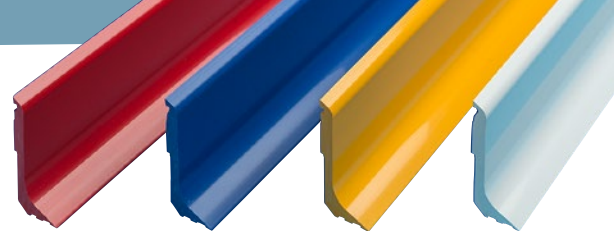
Height: 50 mm
Width: 50 mm
Thickness: 3,3 - 9,6 mm
Length: 2 m
Colour: white sim. RAL 9010

Prefabricated corner pieces (90° external / internal)
for item no. 7550



*"We manufacture our profiles only
in raw material - made in Germany."*

Skirting / plinth and wall protection



WECO PLASTIK® skirting / plinth profiles item no. 7708 and 7715 offers durable solutions for hygienic areas. They are extremely impact resistant and easy to clean.

Advantages:

- manufactured in high quality raw material certified for food processing areas
- no hollow spaces behind
- highly impact resistant
- hygienic because of round shape
- resistant against chemical cleaning agents
- no absorption of water
- easy bonding/sealing
- very good connection of bonding/sealing masses in comparison of PE/HDPE-products
- geometric cavity for U-profiles
- prefabricated corner pieces 90° internal/external
- available also in extra colours

Item no.: 7715

Height: 150 mm
Width: 30 mm
Thickness: 8 mm
Weight: 2.000 g/m
Length: 2 m
Colours: white, grey



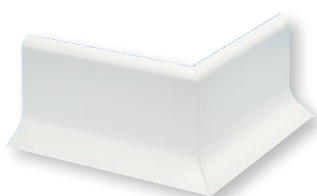
Item no.: 7708

Height: 80 mm
Width: 30 mm
Thickness: 8 mm
Weight: 1.000 g/m
Length: 2 m
Colours: white, grey



Prefabricated corner pieces for item no. 7708
90° external/internal

Prefabricated corner pieces for item no. 7715
90° external/internal



Skirting profile / connection profile for synthetic resin floor

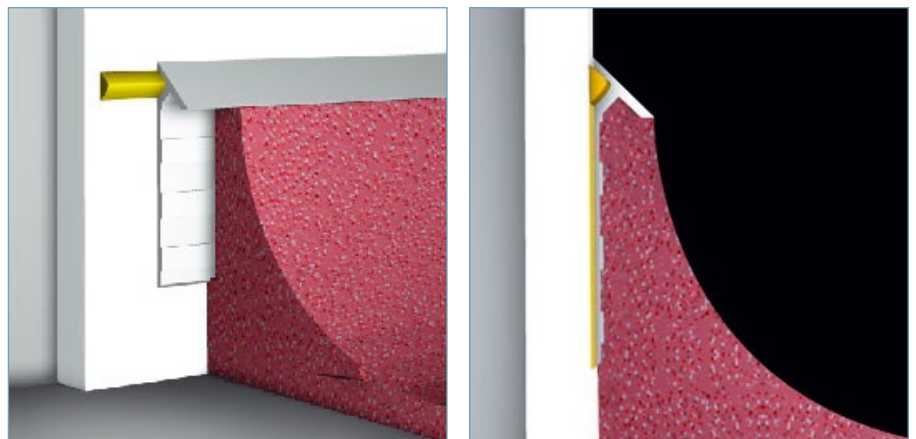
The most important area in food processing environments is the connection between wall and floor. In such wet conditions microbes and bacteriums can grow, when the joining/joint isn't fully sealed. Because of different shrinking behaviour of synthetic floor masses and surface of the wall the connection can burst and can cause an invisible hygienic problems in food processing areas.

Our WECO PLASTIK® skirting profiles for synthetic resin floor fix that problem and allow:

- durable hygienic solution for a water-proof connection between wall and floor
- real working connection with flexible bonding/sealing masses

Item no.: 7710

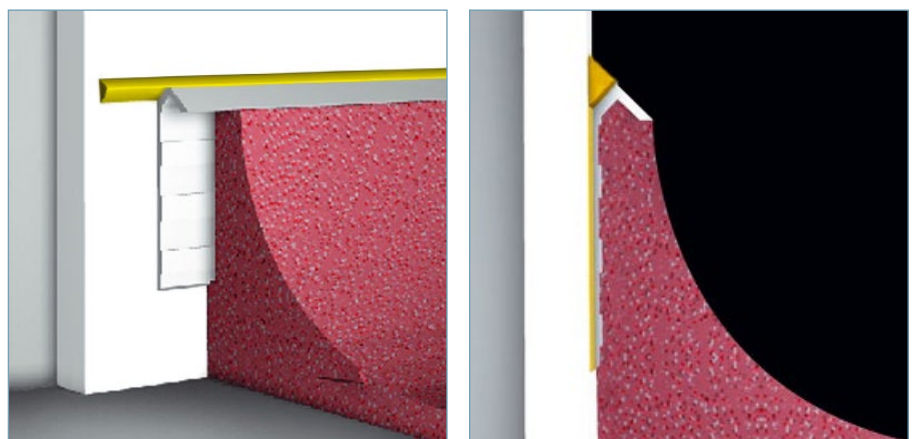
Height: 40 mm
Width: 10 mm
Thickness: 2,2 mm
Length: 3 m
Colours: white



fully sealed on reverse side - invisible sealing joint

Item no.: 7720

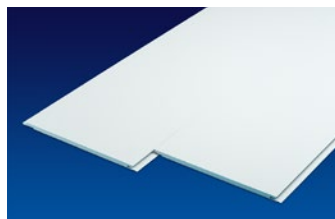
Height: 35 mm
Width: 10 mm
Thickness: 2,2 mm
Length: 3 m
Colours: white



fully sealed on reverse side - visible sealing joint

WECO PLASTIK® – experience in extrusion since more than 50 years.

WECO Plastik® product lines:



Hygienic ceiling
and wall panels



Ceiling panels



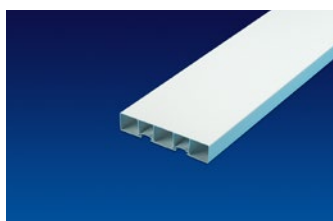
Seams/edging/trim
profiles/accessories



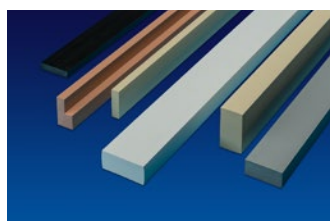
skirting profiles /
protection profiles



Facia profiles /
cladding profiles



Balcony and
fencing profiles



Solid profiles



Custom profiles /
job order production



WECO PLASTIK GmbH
Untere Wiesen 11/1
88416 Ochsenhausen
Germany

Tel. +49-7352-1833
Fax +49-7352-4371

info@wecoplastik.de



www.wecoplastik.de